



Pressure Zone 3 Expansion Project Update

-

Gregory Hill Pump Station & Tanks



WESTMINSTER

*Westminster City Council Meeting
July 10, 2017*

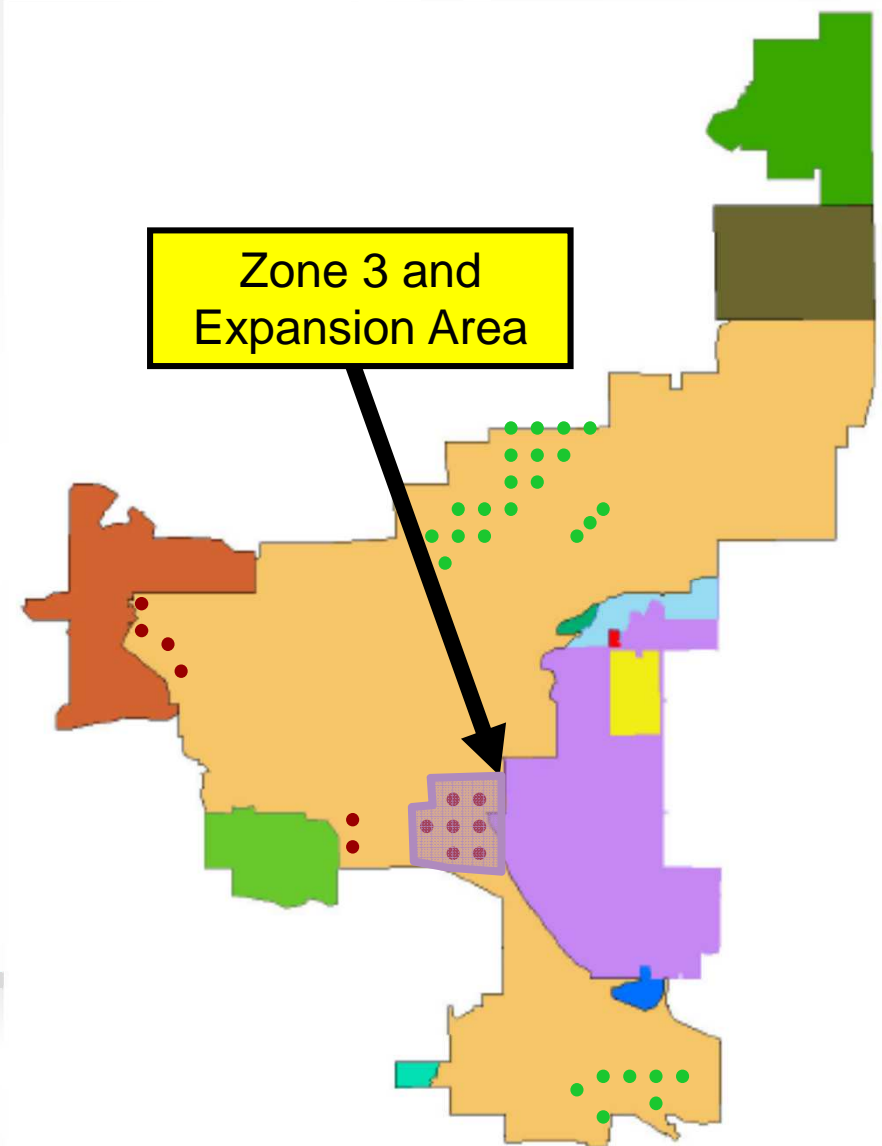
Discussion Outline

1. Review the Pressure Zone 3 Project
2. Review Gregory Hill Project
3. Show Renderings
4. Discuss Proposed Schedule
5. Questions and Discussion



PZ3 Program Is The Latest Series of System Improvement Projects

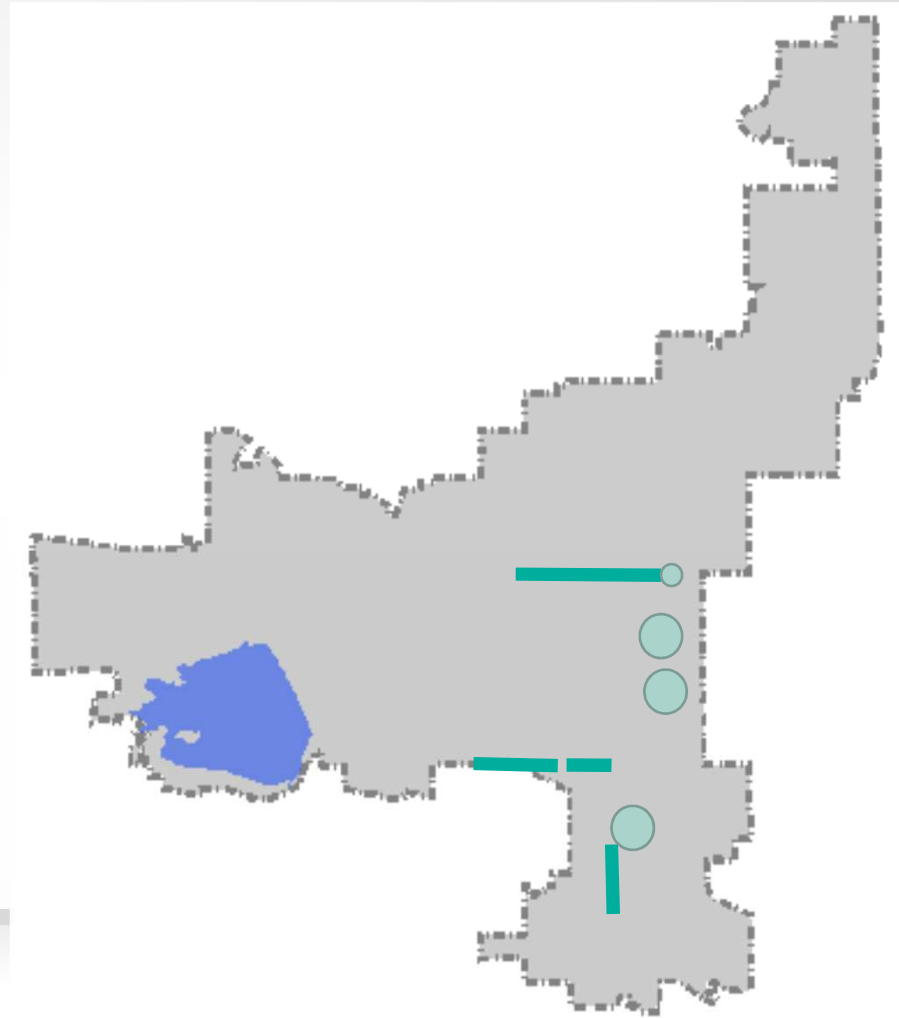
1. Correct Large Areas of Long-Standing Low Pressure
2. Increase Water Storage
3. Connect Existing Storage to More Customers
4. Increase Redundancy to the Existing Pump Stations
5. Replace Aging Infrastructure



WESTMINSTER

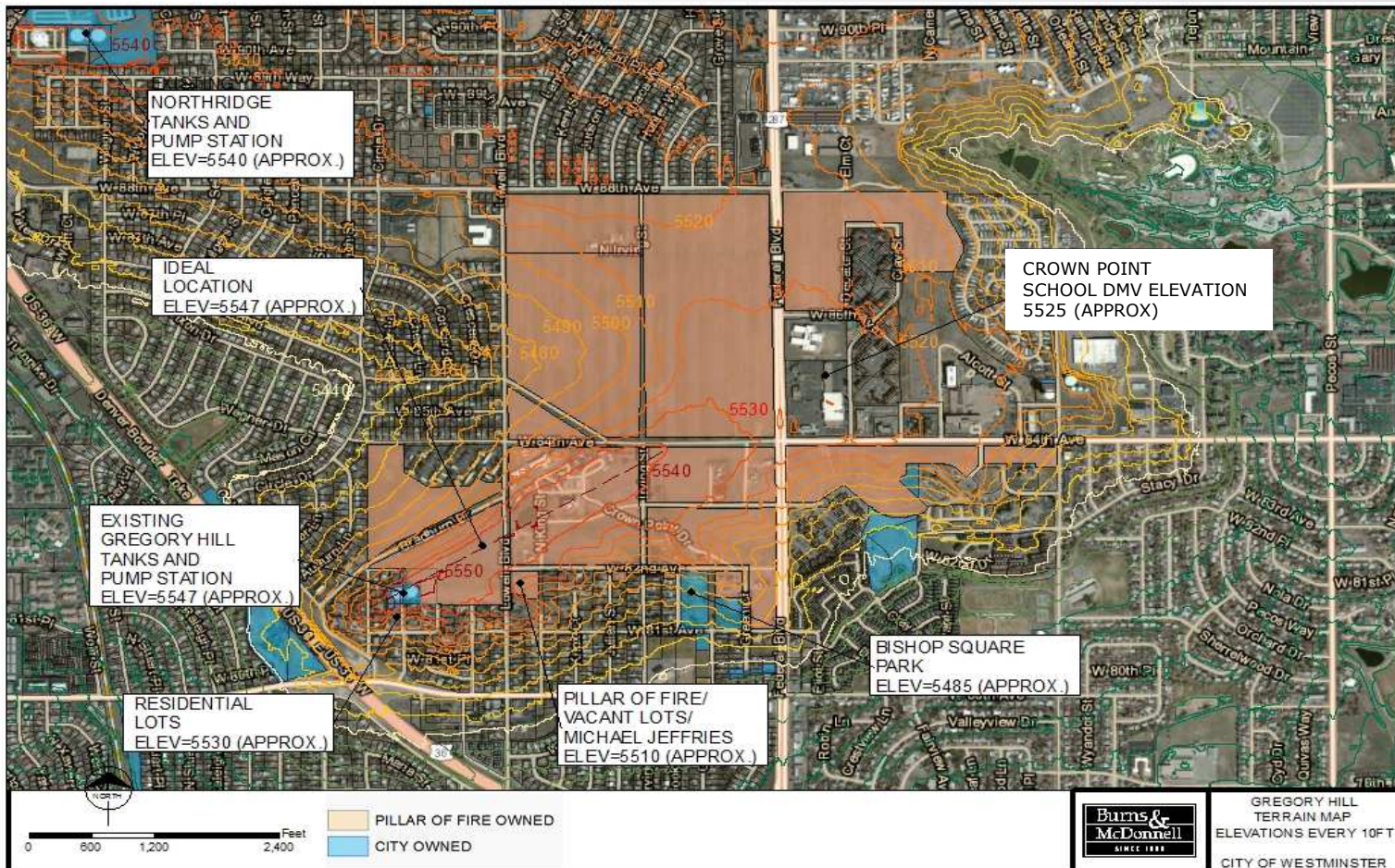
The Zone 3 Expansion Scope Includes 7 System Improvements

1. Demo Sunset Ridge Tank
2. 104th Transmission Main
3. 88th Transmission Main
4. Gregory Hill Area Pipelines
5. GH Site PS & Tanks
6. New Elevated Tank
7. Surge Protection Equipment



WESTMINSTER

Analysis Included Many Sites For Tanks and Different Layouts



WESTMINSTER

The Gregory Hill Site is Best for the Pump Station and Tanks



The Gregory Hill Site was Selected for Many Reasons – Slide 1 of 2

1. Compatibility with Existing System

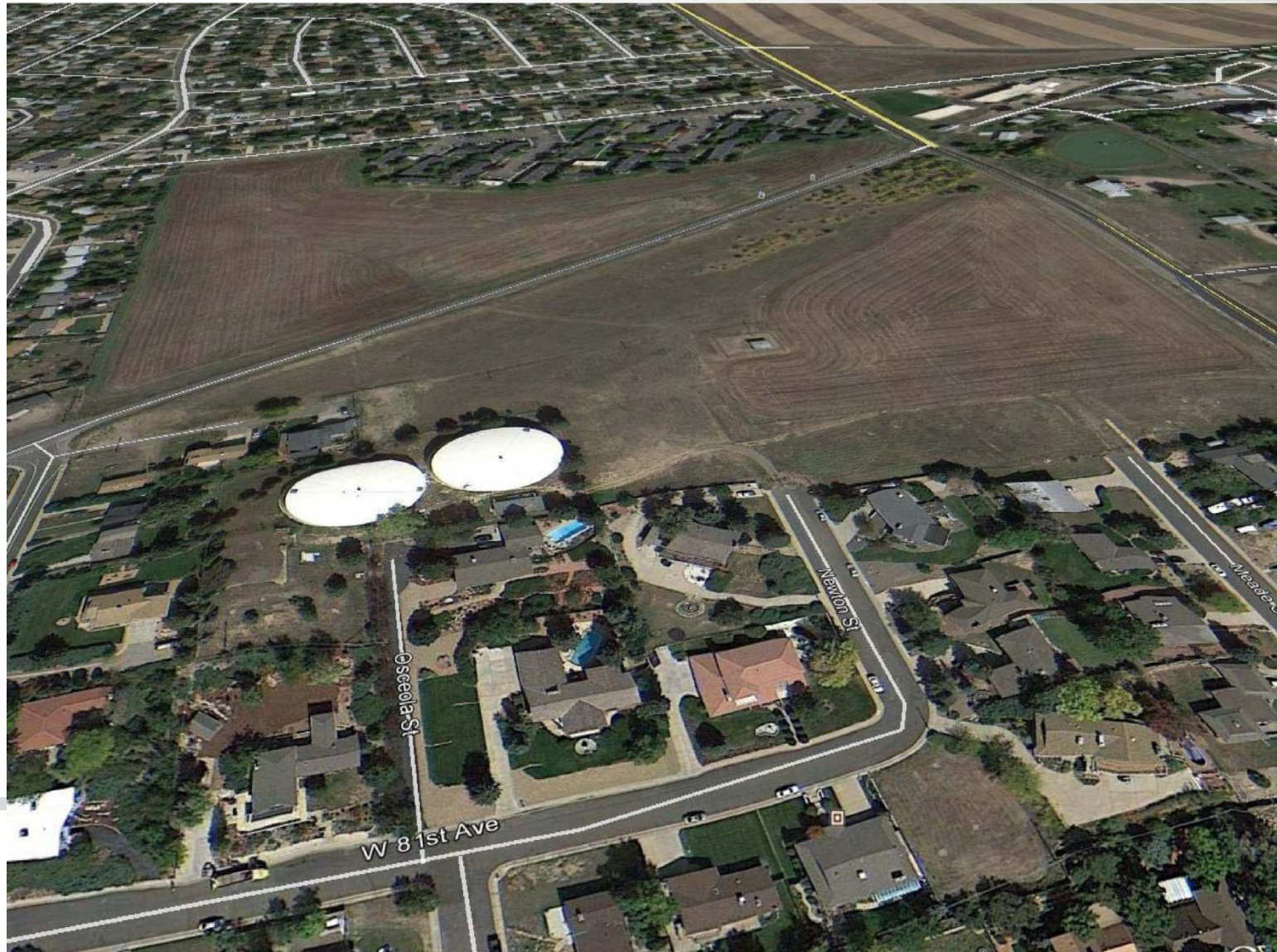
- Existing Ground Storage
- Existing Elevated Storage
- Existing Pump Stations
- Hydraulic Proximity to Transmission Lines
- Current and Future Water Demand Distribution
- Geographic Diversity & Reliability

2. Unique Necessary Elevation for Storage Tanks

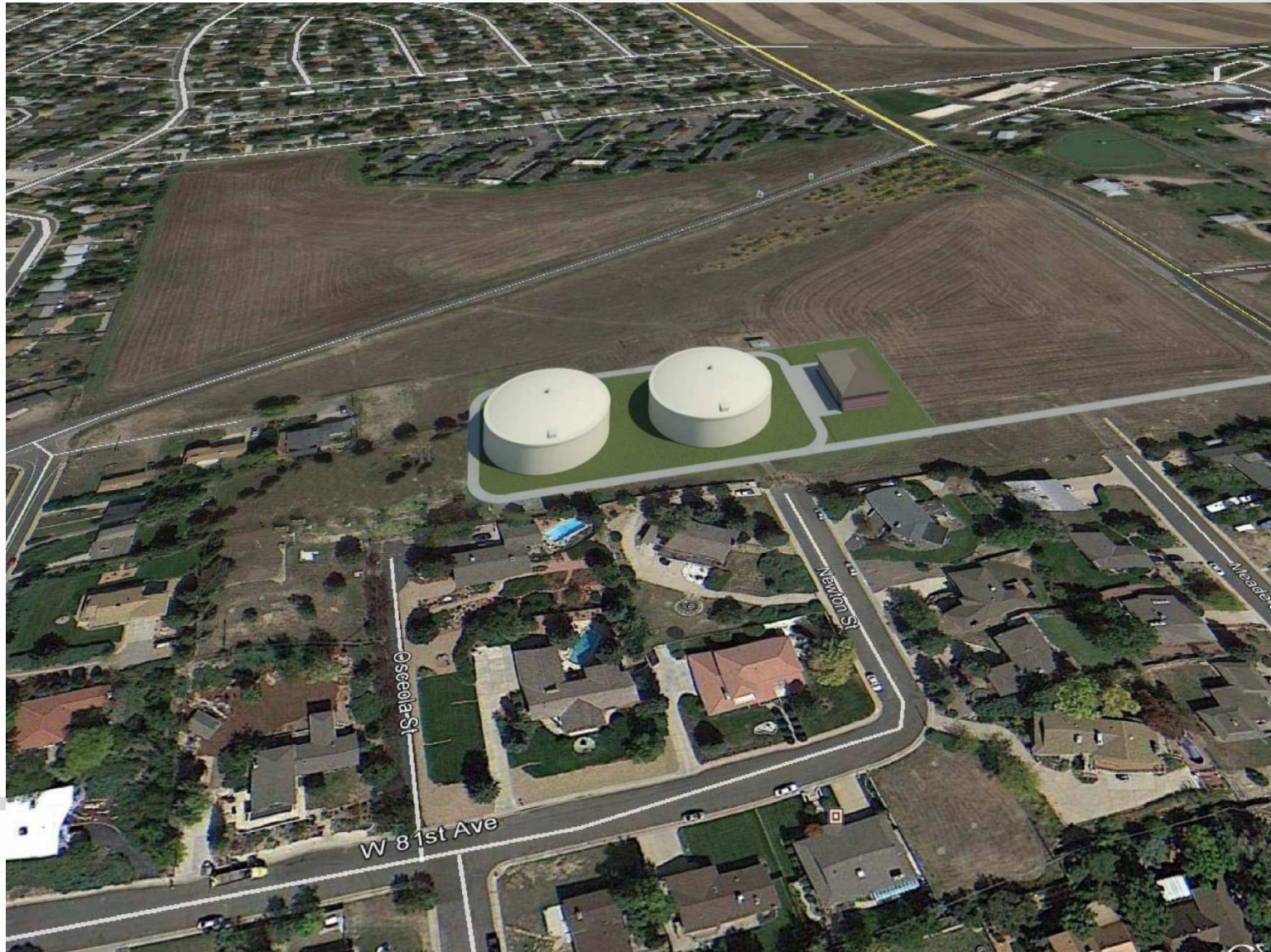


WESTMINSTER

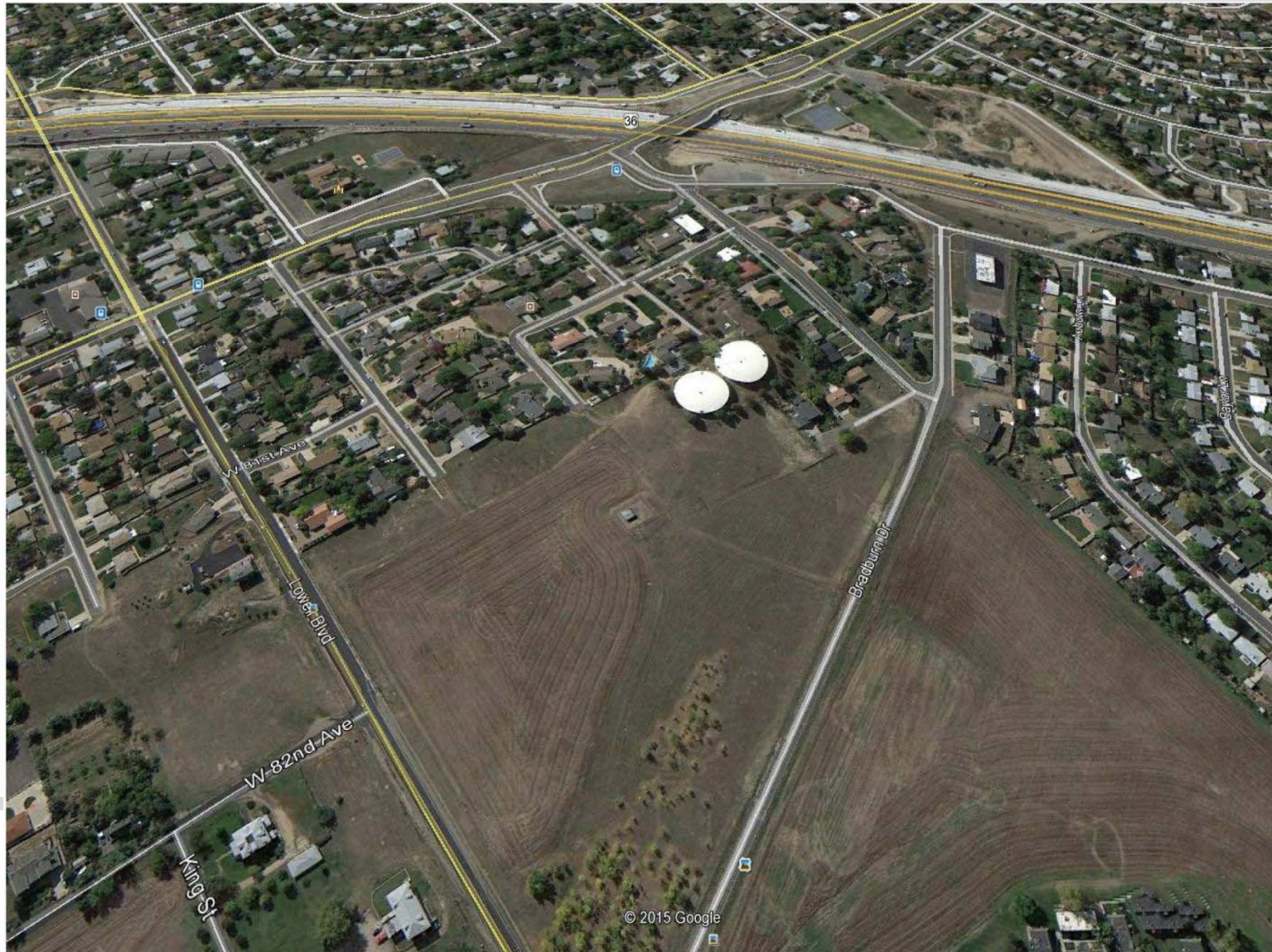
The Existing Site is Too Small and Must Expand East – Slide 1 of 2



The Existing Site is Too Small and Must Expand East – Slide 2 of 2



Project Includes Many Site Enhancements – Slide 1 of 2



Project Includes Many Site Enhancements – Slide 2 of 2



Views from Newton Street Will Change – Slide 1 of 2



Views from Newton Street Will Change – Slide 2 of 2



The New East Tank Aligns with Newton Street – Slide 1 of 2



ResortArchitect.com
Tour Guide

The New East Tank Aligns with Newton Street – Slide 2 of 2



Setbacks to Property Line Will Increase - Slide 1 of 2



Setbacks to Property Line Will Increase - Slide 2 of 2



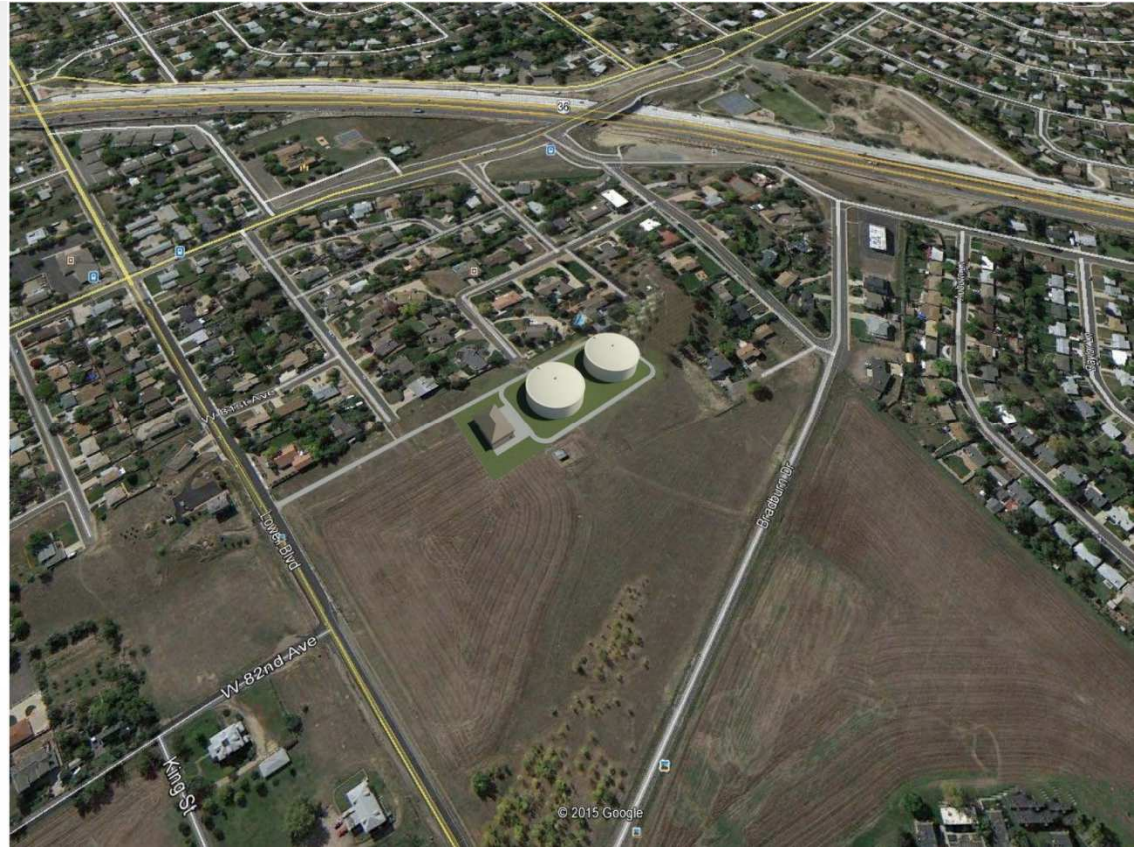
The Gregory Hill Project Is Awaiting Next Steps

1. Bids Solicited - Currently Being Reviewed
2. Options with Neighborhood Input
 - Site Access, Fencing, Landscaping, Other Related Ideas
3. Target August City Council for Construction Contracts
4. 18-Month Construction



WESTMINSTER

Questions



Dan Strietelmeier, Project Manager

303-658-2179 or dstriete@cityofwestminster.us

Stephen Grooters, Utilities Engineering Manager

303-658-2194 or sgrooters@cityofwestminster.us



WESTMINSTER